

Clarice Cliff

Clarice Cliff was an English **ceramic artist**.

[What is a ceramic artist? What do they use in their art?](#)

Pottery!

Her love of pottery began while visiting an aunt, who hand-painted items at a local pottery company.

Clarice Cliff was born on 20th January 1899 in Stoke-on-Trent to her parents, Harry and Ann, in a terraced house.

Clarice was sent to a different school from her siblings. At the age of 13, she left school and started working in the pottery industry.

Clarice's first job was as a gilder (someone who adds a thin layer of gold to solid surfaces). Once she became more skilled, she moved on to freehand painting at another pottery factory. Alongside this, she studied art and sculpture at night school. After only a few years, in 1916, Clarice moved again to a new factory. This was unusual for a woman at that time. People usually remained in roles, once they had mastered them, in the hope of earning more money.

Clarice learnt many new skills, including outlining and enamelling (The process of applying a glaze to the pottery). Her work was soon brought to the attention of one of the factory owners, Colley Shorter. With his support, she had the opportunity to study at the Royal College of Art, in Paris.

Clarice soon became recognised as a talented ceramic artist and in 1927, was given her own studio.

Clarice developed a new design for pottery called Bizarre.

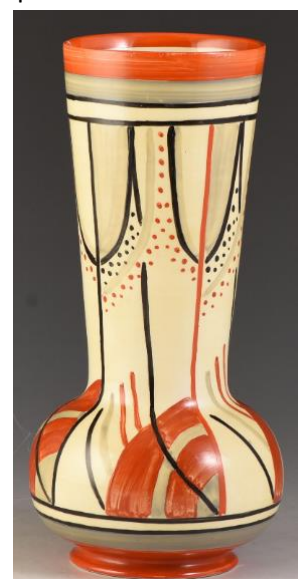
It was unlike anything that had been seen before. It was made up of bright colours and shapes, in particular, triangles.

Clarice died on 23rd October 1972 in Staffordshire.

Many original pieces of Clarice Cliff pottery have gone on to sell for thousands of pounds.



Examples of Clarice Cliff's work





Task One

In your Home Learning books, copy one of Clarice Cliff's designs. Remember to use big shapes, especially triangles. There is a template of a vase below to help you.

Task Two

Answer these questions into your Home Learning books.

1. How are these vases different to the Ancient Greek vases we looked at last half term?
2. What do you think these vases are used for?
3. If you could ask Clarice Cliff a question about her artwork, what would it be?

