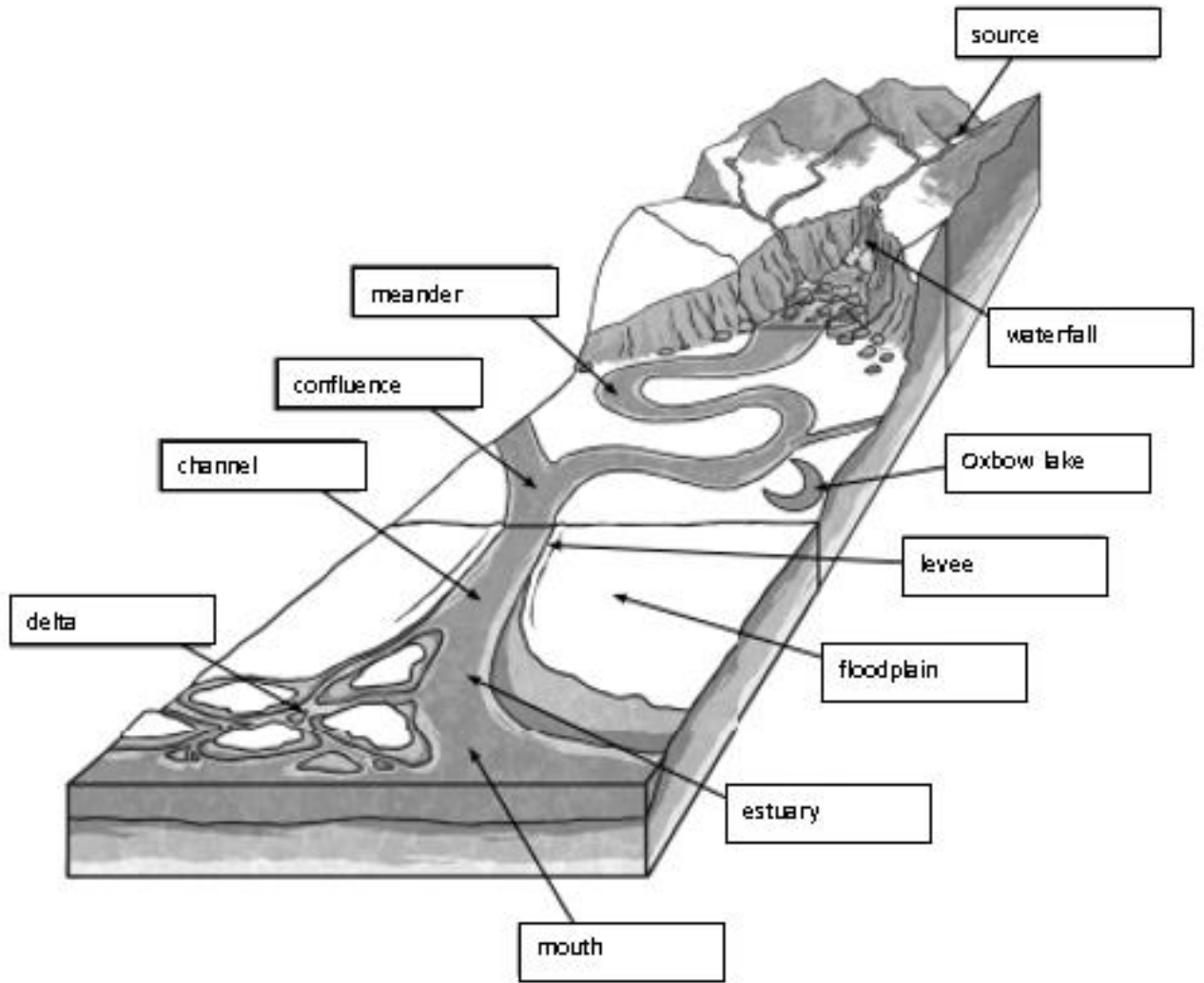


source	a spring or fountain head from which a river or stream begins
oxbow lake	a curved lake formed from a horseshoe bend in a river
mouth	the part of a river where the river meets another river, a lake, a reservoir, a sea or an ocean
levee	an embankment built to prevent the overflow of a river
channel	a length of water joining two larger areas of water, especially two seas.
confluence	the junction of two rivers, especially rivers of approximately equal width
delta	a triangular area of sediment deposited at the mouth of a river
estuary	partially enclosed coastal body of water with one or more rivers or streams flowing into it and with a connection to the open sea
waterfall	a cascade of water falling from a height
floodplain	an area of low-lying ground next to a river, formed of river sediments
meander	a winding curve or bend of a river



channel	confluence	delta	estuary	floodplain	levee
meander	mouth	oxbow lake	source	waterfall	