

Please begin by writing today's date and skill in your home learning book

Loom link:

<https://www.loom.com/share/580cca98dbb4427286603e20958fe715>

Password: lunior

Monday 14th September 2020

To identify the features of a river

Last week, we introduced you to our topic in geography this term – rivers.

Using an atlas, we located some of the major rivers around the world and the continent that they can be found in.

Can you remember where these rivers are? Write the answers down in your home learning book

The Nile river is found in the country _____ which is in the continent _____.

The Yellow river is found in the country _____ which is in the continent _____.

The river Darling is found in the country _____ which is in the continent _____.

Listen to the loom link and Miss Clarke will go through the answers with you!

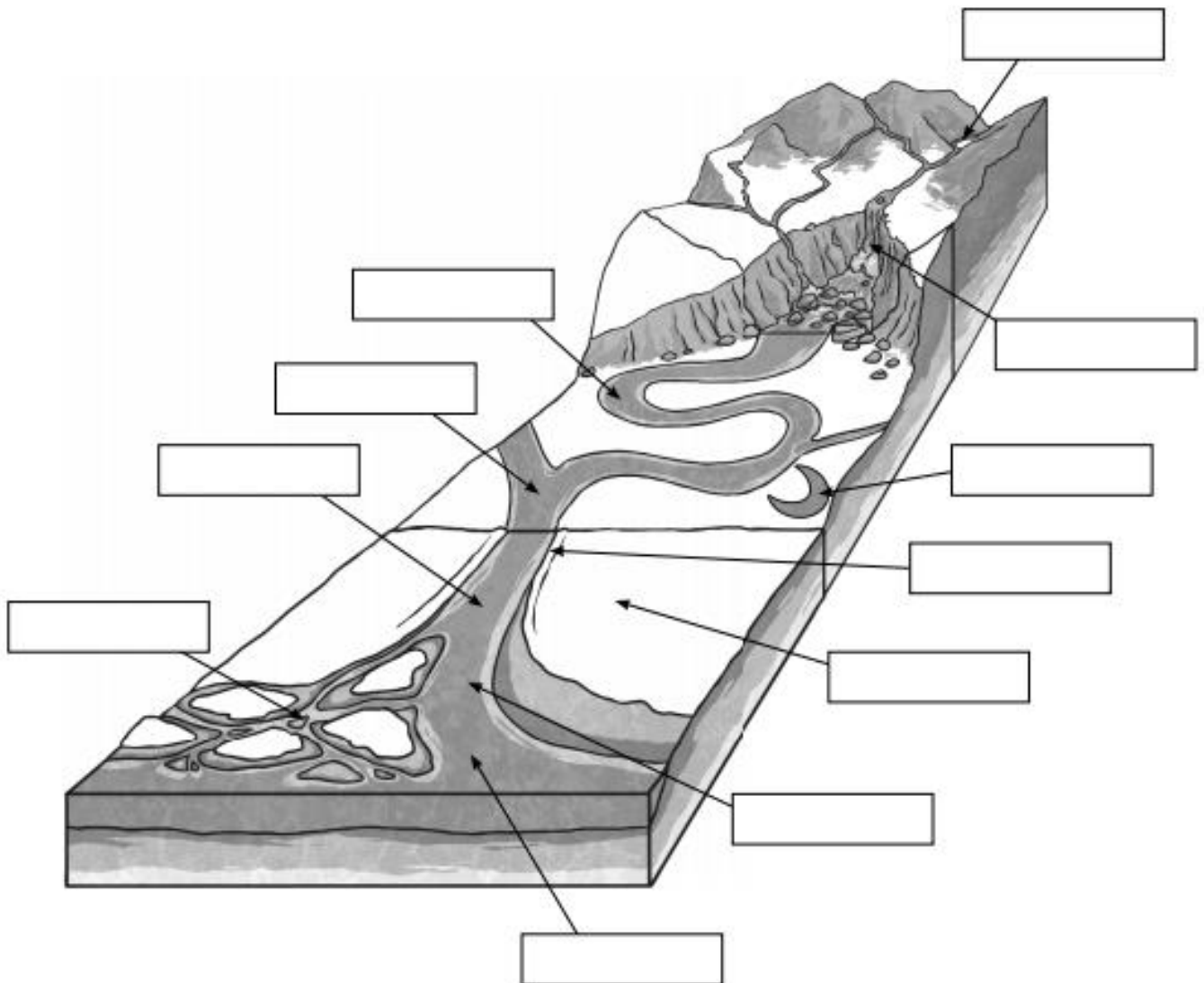
This week, we are going to look at the different parts of a river and familiarise ourselves with the correct terminology.

The following words and definitions have been jumbled. Can you match them correctly? *

source	a triangular area of sediment deposited at the mouth of a river
oxbow lake	the junction of two rivers, especially rivers of approximately equal width
waterfall	the part of a river where the river meets another river, a lake, a reservoir, a sea or an ocean
mouth	an embankment built to prevent the overflow of a river
levee	a curved lake formed from a horseshoe bend in a river
channel	a length of water joining two larger areas of water, especially two seas.
confluence	a spring or fountain head from which a river or stream begins
delta	a cascade of water falling from a height
estuary	partially enclosed coastal body of water with one or more rivers or streams flowing into it and with a connection to the open sea
meander	an area of low-lying ground next to a river, formed of river sediments
floodplain	a winding curve or bend of a river

Let's check if you got the answers correct!*

Now that you have explored what these different words mean, can you identify these features on the diagram below? Start with the words that you are the most familiar with before moving on to the ones you are less familiar with.



channel	confluence	delta	estuary	floodplain	levee
meander	mouth	oxbow lake	source	waterfall	

Check the answer sheet on the website to see if you got the answers correct.

These words are tricky to remember. For your self-assessment, we would you like to write the definition of 3 words that you didn't know before the start of the lesson and explain what they are.

Well done for your hard work today!